

An aerial photograph of a modern architectural courtyard. The central area is a large, paved plaza with a light-colored, geometric tile pattern. People are scattered across the plaza, some sitting on a low white wall that surrounds it. The courtyard is bordered by lush greenery, including several large, perfectly circular topiary bushes and wavy, dark-colored paths that separate the green areas. The overall design is clean, symmetrical, and emphasizes a connection between nature and urban architecture.

# O<sub>2</sub> Move

**CHALLENGING THE FUTURE OF MOBILITY.**



**MODULAR MOBILITY HUBS FOR  
SUSTAINABLE MULTIMODALITY.**



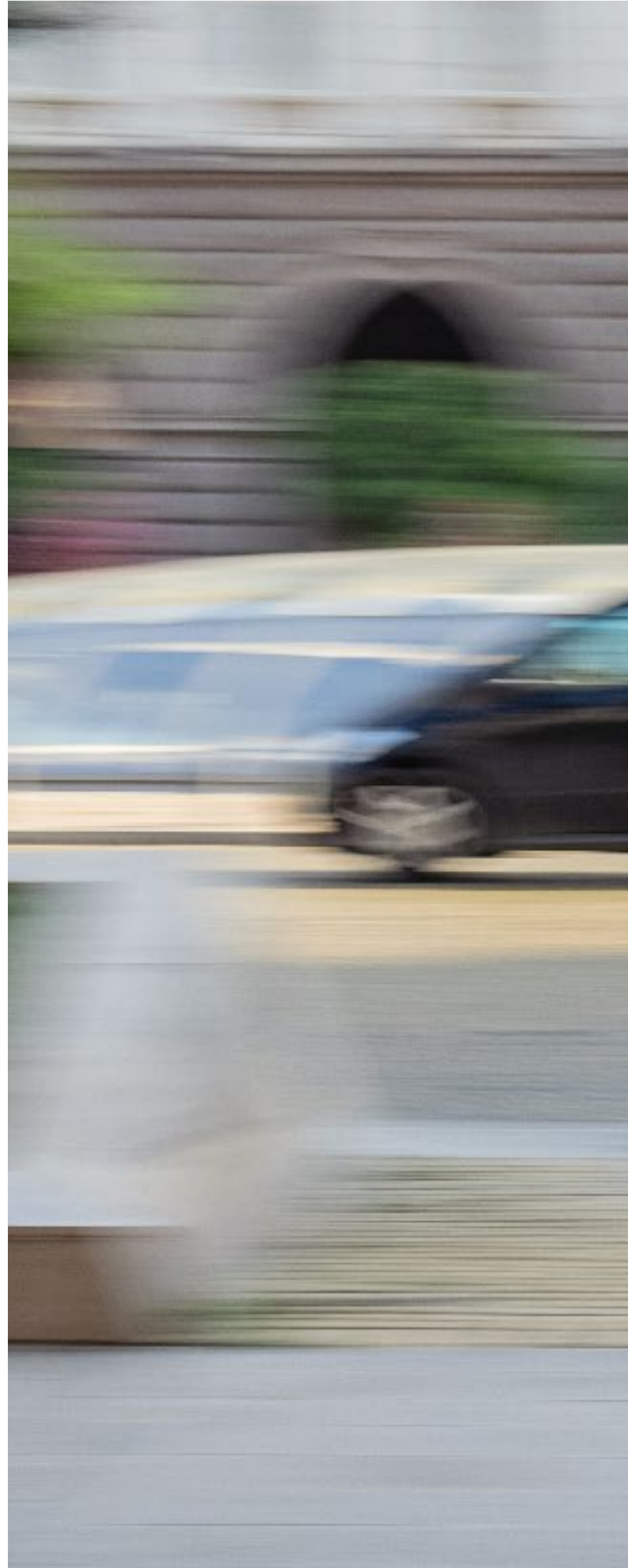
The brand introduces a new concept of mobility integrated with a technological solution in the context of smart cities that responds to the various challenges currently presented by the public transport network, such as the scarcity or lack of information in real time, the lack of rest areas, among many other amenities. The brand presents an innovative solution to real problems for urban and peri-urban areas. The O2 Move is the embodiment of this solution.

## WHAT IS O2MOVE

O2MOVE is a concept of urban mobility hubs that combine physical infrastructure, technological innovation, and multimodality. It is important to build not just one hub but a network of them. The O2MOVE hubs have a modern and fluid architectural language defined by a sustainable construction system, which is structured according to principles of modularity, and prefabrication upon the basic principles of circular economy.

Basically, it is an innovative, simple and flexible new product [physical structure and cyberproducts] that seamlessly brings together different mobility services, filling in the gaps to provide an answer to common daily mobility needs of the citizens. These hubs and mobility hotspots form a network that is designed to complement the public transport services, favoring its use, as well as other shared modes of transport, pulling into potential new clients, while providing for a comfortable and efficient option to individual transport.

The O2MOVE hubs can be customized. The design of spaces, the choice of materials, the textures, the furniture elements, and fixtures are designed up to the smallest detail, with an innovative, flexible approach that incorporates the physical characteristics and the sociodemographic profiles of a city and its surrounding areas. Hubs can range in size, from as small as two parking slots, that better suit areas with lower demand and possibly deprived of commuting options, e.g., train stations in rural areas, to a large hub in the vicinity of a BRT station.







MULTIMODAL.  
ECO-FRIENDLY.  
FLEXIBLE. DIGITAL  
INTEGRATION.  
SAFE. ACCESSIBLE.



## PHYSICAL INFRASTRUCTURE

Hubs feature solar panels as their own energy supply, which aligns with the goal of reducing carbon emissions and promoting renewable energy sources.

### CITIZENS CAN BENEFIT FROM SEVERAL FACILITIES ACCORDING TO THE TYPOLOGY OF EACH HUB:

- Interactive panels, including e-paper displays;
- Amenities: lockers, toilet facilities, ATMs, and vending machines;
- Docking stations for shared bikes and e-scooters;
- Smart lighting, environmental control sensors, and biotech materials for carbon capture.

**The O2MOVE network of hubs is also accessible for older people and those with mobility impairments who may struggle walking long distances or accessing public transport modes.**

## DIGITAL INFRASTRUCTURE FOR PASSENGER-RELATED SERVICES

The O2MOVE hubs provide real-time and scheduled transport information to passengers, based on the data provided by transport operators.

### TO PROVIDE CONVENIENCE AND CUSTOMIZATION, THE HUBS FEATURE TOUCHSCREEN INTERFACES THAT ALLOW PASSENGERS TO:

- Plan their journey using a combination of transport modes;
- Explore commuting possibilities with interactive spider maps, which depicts the route network available from a given hub, as well as any landmarks or points of interest in the surrounding area;
- Use an integrated dial-a-ride platform for last-mile, first-mile journeys between O2MOVE hubs, and between hubs and points of passengers departure.





## WHAT WE SOLVE

**THE BRAND WAS BORN TO RESPOND TO THE PROBLEMS THAT AFFECT THE MOBILITY OF PEOPLE IN URBAN AND PERI-URBAN AREAS, INCLUDING THE PUBLIC TRANSPORT NETWORK:**

- The importance of reducing climate impact;
- The public transport network may not provide the adequate infrastructure to accommodate older people and those with mobility impairments;
- Public transport does not meet people's needs;
- Micro-mobility services are not well aligned with public transport;
- Information about transport and services are not aggregated in a single source;
- Infrastructure [stations/hubs/stops] are uncomfortable and don't respond to the user's needs;

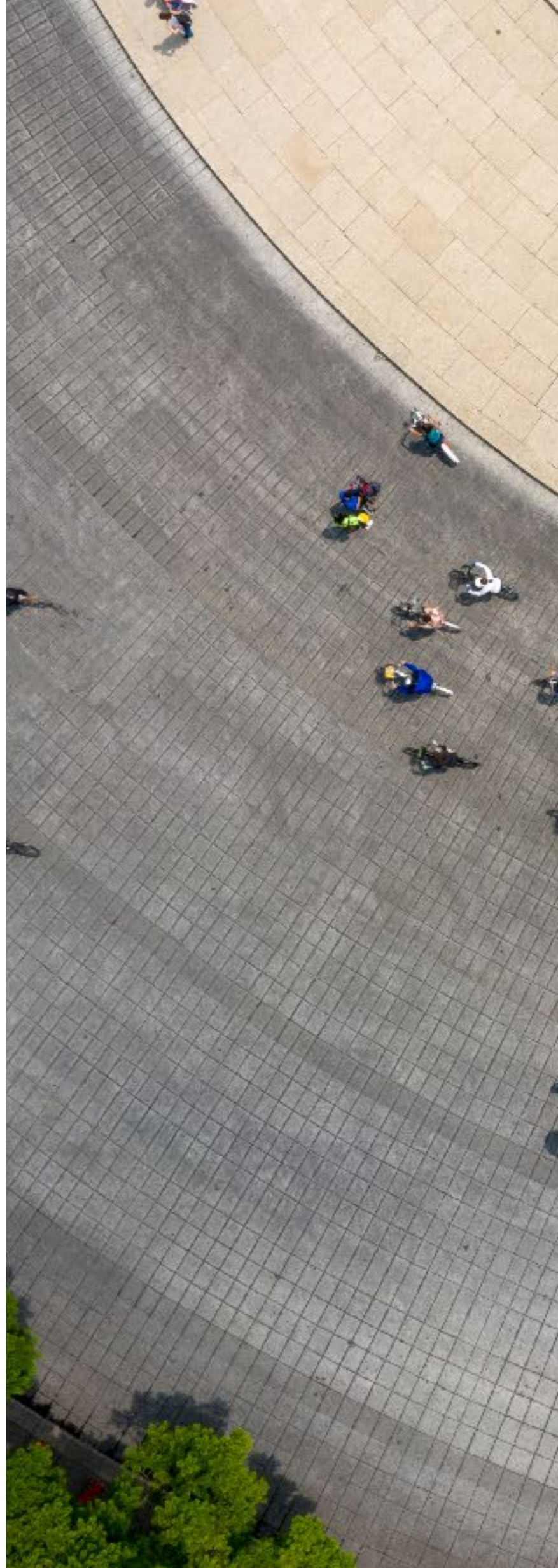
## A DIFFERENT CONCEPT OF MOBILITY

The BE Neutral consortium invites people to challenge the future of mobility, which should be more sustainable, more flexible and more innovative. As this is a proposal for a solution to the numerous challenges that cities and public transport network present, the concept promotes the idea that the future of cities coexists with the advancement of technology combined sustainability policies and that it should promote sustainable mobility solutions within the urban space, turning it more accessible and environmentally friendly, insofar as it fosters sustainable mobility.

## OUR VISION

The vision of O2MOVE hubs is to improve the accessibility and comfort of passengers by fostering multimodality between conventional public transport, dial-a-ride services and active transport modes like shared bicycles or electric scooters. It is important to build not just one hub but a network of them to increase the number of mobility options for the passengers. The hub incorporates the required information and communication technology (ICT) infrastructure that allows passengers to request and ride different transport modes within the physical premises of the hub.

The O2MOVE network of hubs also aims to foster community engagement by inviting citizens to participate on co-creation processes like tactical urbanism, which are foreseen in the project to deploy short-term, low-cost, scalable interventions to drive long-term change.











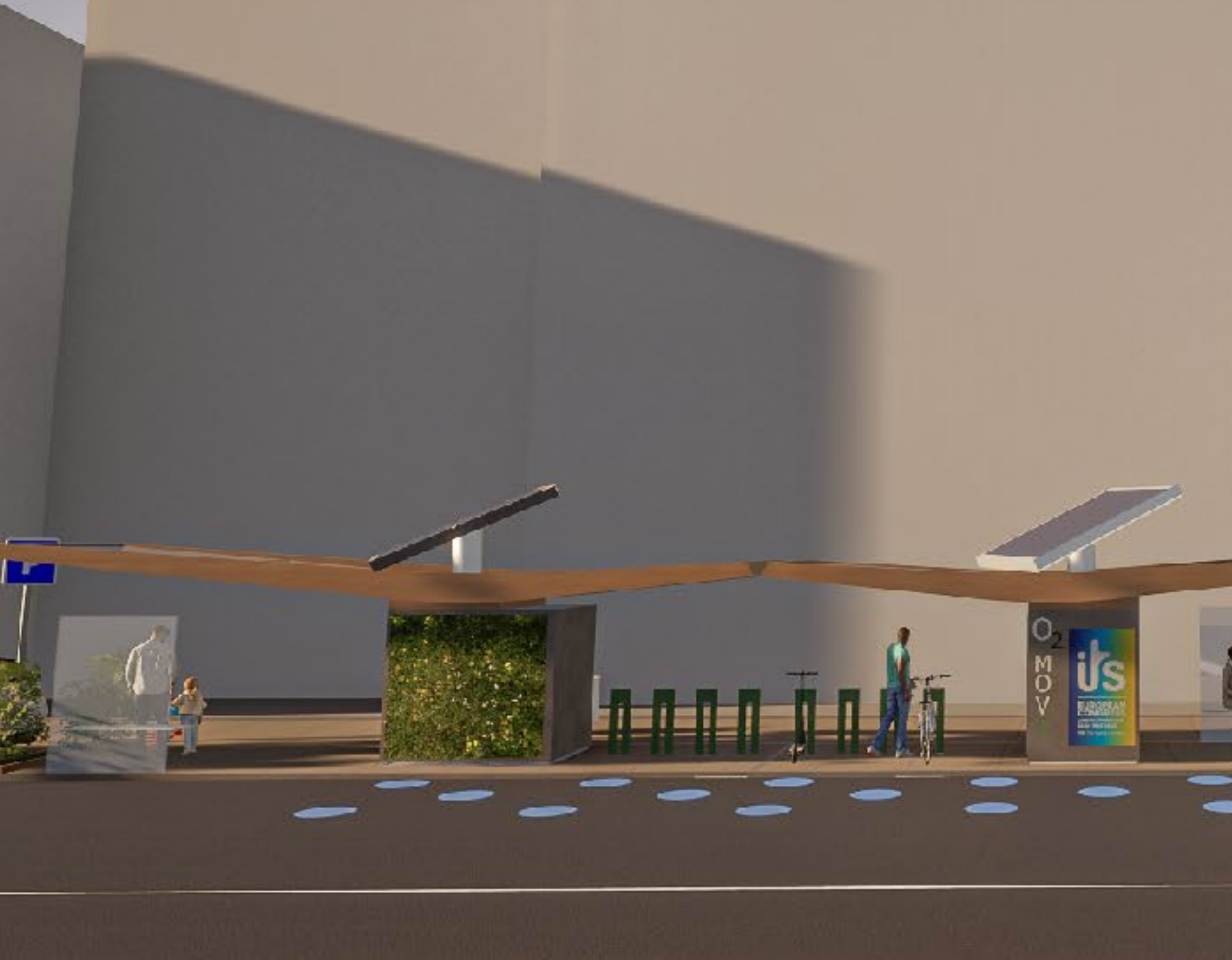
# OUR NETWORK

A PHYSICAL NETWORK THAT CONNECTS SEVERAL TRANSPORT MODES, INCLUDING RELEVANT SERVICES THAT RESPOND TO PEOPLE'S AND ENVIRONMENT'S NEEDS.

**02 MOBILITY HUBS | 02 MOBILITY SPOTS | 02 MOBILITY NETWORK**







## HOW IT WORKS

### PROOF OF CONCEPT

Within the pilot demonstrator, the consortium will define the O2 Move network, defining the typology and location of hubs that will be implemented, and the transport services that will be integrated into the hub network.

To demonstrate how an O2 network could be effectively implemented in a real context, two pilots will be carried out in two different cities throughout the project.

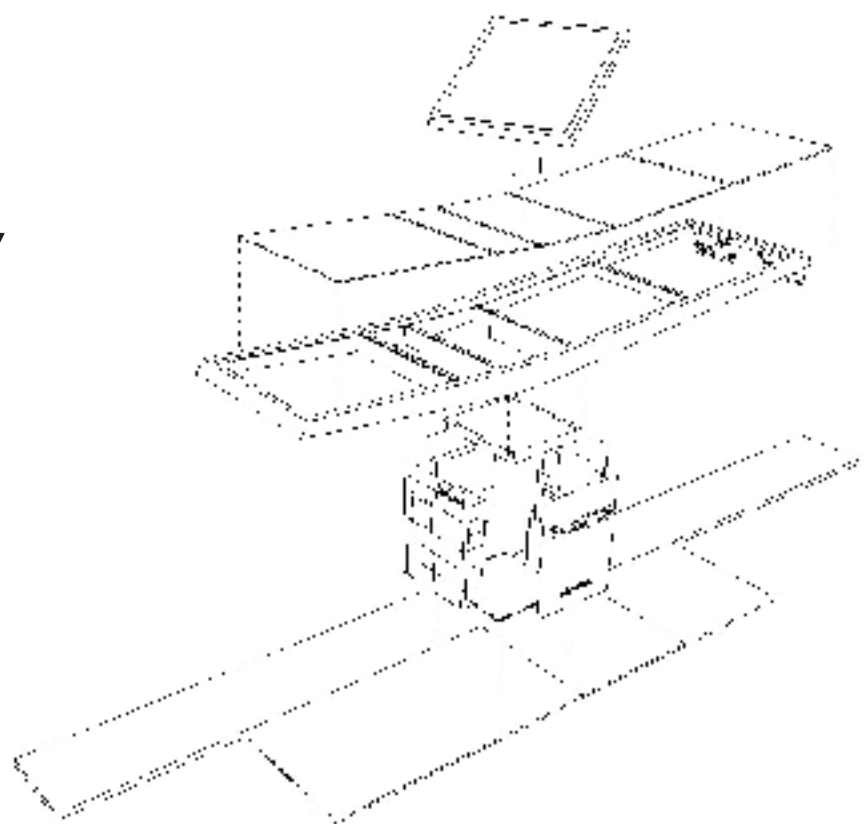
### HOW IS IT EASILY INTEGRATED WITHIN A CITY?

Our solution involves repurposing on-street parking spaces as modules for the hub. By using only two parking spaces, even the simplest configuration of the hub can be accommodated. The modular design also allows for easy expansion and adaptation to local contexts and requirements. This approach helps to optimize the use of limited urban space while also promoting sustainable mobility solutions.



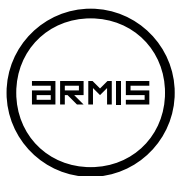


**THE O2 MOVE IS EASILY  
ADJUSTABLE AND  
CAN BE REFLECTED  
IN A CATALOGUE OF  
TAILORED SOLUTIONS**





## PROJECT CONSORTIUM







## FRAMEWORK

The O2MOVE is a result of a Portuguese RD&I consortium — in ongoing development — funded by the European Union’s recovery and resilience plan after the COVID-19 pandemic that aims to devise innovative products and services to improve sustainable mobility in urban and semi-urban areas, and to reduce the carbon footprint.

THE PROJECT INTEGRATES THE AGENDA:

BE  
NEUTRAL







O2MOVE.COM